

1

2

1. Iguana Circo Wall Model (at the top)
2. Iguana Circo Wall Model (below)



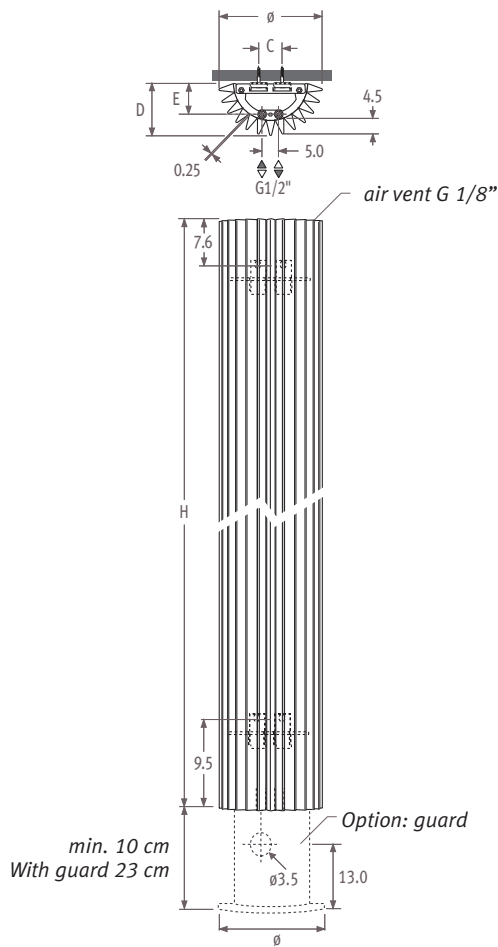
Iguana Circo Wall Model



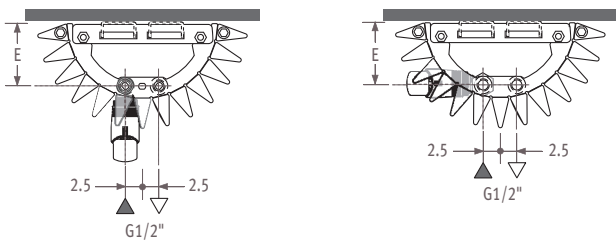
Iguana Circo Wall mounted model

Dimensions

CIRW_Circo Wall



Position flow and return pipe



With connection sets 31-32-33-34-43-44
Remark: flow and return can be reordered.

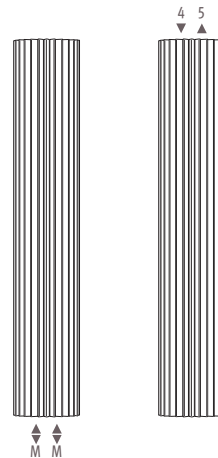
With connection sets 41-42

Dimensions in cm

\emptyset	27.8	31.3	34.8
C	7.4	10.8	14.4
D	14.2	15.7	17.7
E	7.7	9.6	11.5

Connections

Two pipe



Standard connection

Code MM

Top end connection

Code 45 or 54

(1° number > flow)

When ordering a top end connection, no insert pipe should be ordered. Air vents should be positioned on the central heating pipes.

Ordering code: specify code 45 or 54 instead if MM, no surcharge.

One pipe connection

The standard radiator can be connected to a one pipe system with connection sets 41 or 42. With a maximum of 2 radiators per heating ring.

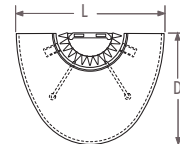
Notice

To guarantee the output of the Iguana models and to limit the pressure drop, Jaga recommends the use of tube diameter 16/2, 18/1 or 18/2.

Dimensions options

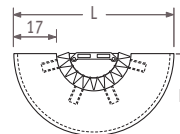
Table

\emptyset	27.8	31.3	34.8
L	66.0	73.0	80.0
D	50.0	55.0	60.0



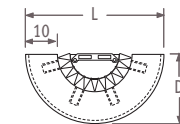
Large shelf

\emptyset	27.8	31.3	34.8
L	63.7	67.2	70.7
D	31.2	32.9	34.7



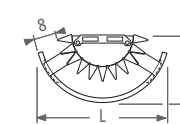
Small shelf

\emptyset	27.8	31.3	34.8
L	49.7	53.2	56.7
D	24.2	25.9	27.7



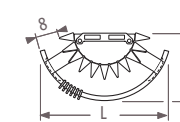
Towel rail

\emptyset	27.8	31.3	34.8
L	42.7	42.7	49.3
D	22.1	22.1	25.3



Hat rack

\emptyset	27.8	31.3	34.8
L	42.7	42.7	49.3
D	22.1	22.1	25.3



Prices & outputs



Standard delivery:

- Circo Wall mounted model with central connection MM underneath
- wall fixing
- 2 chrome-plated air vents G 1/8"

Standard colours:

- sandblast grey metallic 001
- white 301 (RAL 9010 satin)
- white 333 (RAL 9016 satin)

Iguana CIRW

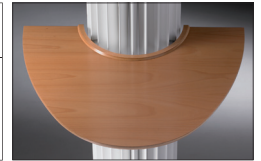
code height length colour conn.
ORDERING CODE: CIRW. 180 027. XXX /MM

H		L 027	031	034
180	75/65/20	801	946	1092
	90/70/20	1041	1229	1419
	st. colour other	65886	65887	65888
192	75/65/20	854	1009	1164
	90/70/20	1106	1307	1507
	st. colour other	65890	65891	65892
200	75/65/20	887	1048	1209
	90/70/20	1146	1354	1562
	st. colour other	65893	65894	65895
220	75/65/20	961	1136	1311
	90/70/20	1235	1460	1685
	st. colour other	65896	65897	65898
240	75/65/20	1024	1210	1397
	90/70/20	1309	1546	1785
	st. colour other	65899	65900	65901

Options

Table in beech veneer

CODE	Type	
9087.012660	Circo ø 27	70326
9087.012730	Circo ø 31	70327
9087.012800	Circo ø 34	70328



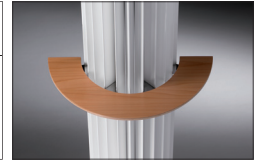
Large shelf in beech veneer

CODE	Type	
9087.010637	Circo ø 27	70320
9087.010672	Circo ø 31	70321
9087.010707	Circo ø 34	70322



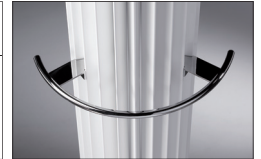
Small shelf in beech veneer

CODE	Type	
9087.011497	Circo ø 27	70323
9087.011532	Circo ø 31	70324
9087.011567	Circo ø 34	70325



Towel rail chrome-plated aluminium

CODE	Type	
9087.013427	Circo ø 27	70329
9087.013427	Circo ø 31	70329
9087.013493	Circo ø 34	70330



Hat rack chrome-plated aluminium

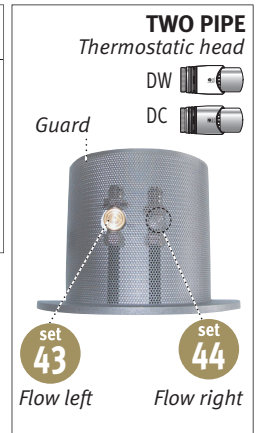
CODE	Type	
9087.014427	Circo ø 27	70331
9087.014427	Circo ø 31	70331
9087.014493	Circo ø 34	70332



Connection set with guard (colour to match radiator)

CODE	colour	Ø	st. colour	other
COIG.28L.DW.3...	fill in sleeve coupling	27	107070	
COIG.28L.DC.3...		27	107069	
COIG.31L.DW.3...		31	107074	
COIG.31L.DC.3...		31	107073	
COIG.34L.DW.3...		34	107078	
COIG.34L.DC.3...		34	107077	

Remark: For flow right (set 44), R instead of L.
Ex. COIG.28R.DW.3... ..



Output measured in accordance with EN442, at a water temperature of 75/65 and a room temperature of 20°C (ΔT=50).

Connection sets & valves
Technical info
Correction factors
Product descriptions
Colours

Page
203
239
243
252
263

Price incl. thermostatic valve, lockshield and sleeve couplings.
For connection to the wall: order 2 curves.
Sleeve couplings for connection sets with cover plate see p.209.
ATTENTION: floorboards need to be removed for the guard.